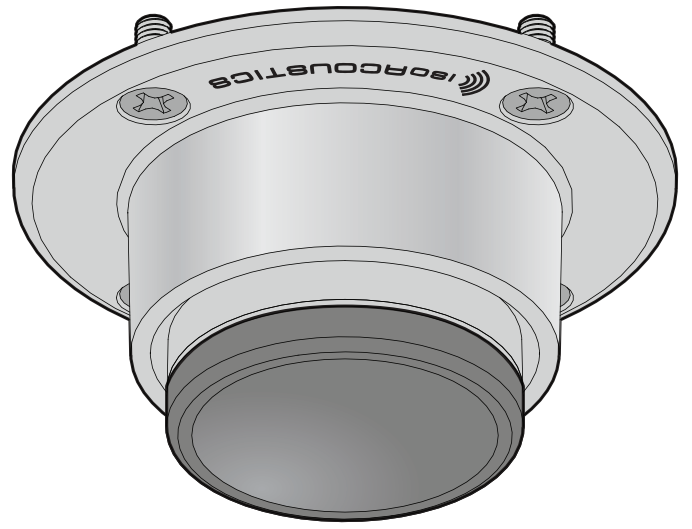




IsoAcoustics® warrants the STAGE 1 products against evident defects in material and workmanship for a period of two years from the date of original purchase. This warranty does not cover mechanical damage resulting from misuse or abuse, lack of reasonable care, damage due to force majeure or natural forces. IsoAcoustics® shall not be liable for any special, indirect, direct or consequential damages to other products or property.

STAGE 1

For Guitar, Bass and
Instrument Amplifiers

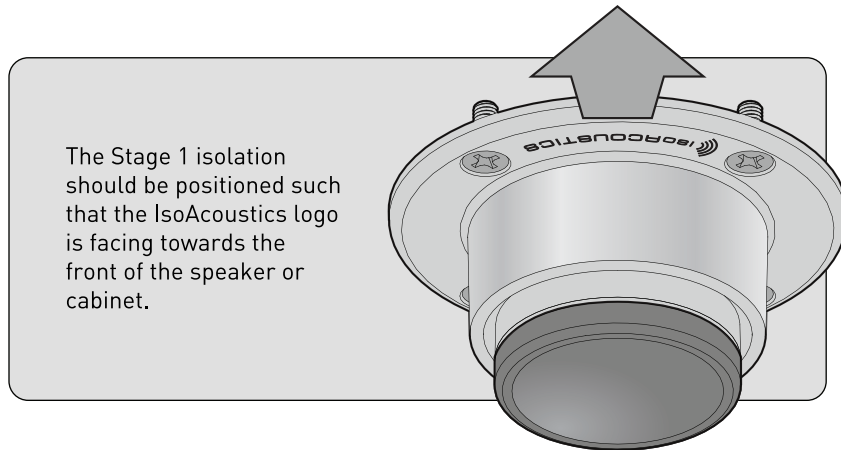




Congratulations on your purchase of the Stage 1 isolators from IsoAcoustics. The Stage 1 uses award winning patented isolation technology that is used only by IsoAcoustics to deliver superior isolation and enhanced sound clarity. IsoAcoustics Stage 1 isolators decouple guitar/bass amps, cabinets, PA's, subwoofers and stage monitors from the stage while still maintaining sound clarity and the bass punch in a performance.

Enjoy consistent results every time you play.

FRONT OF CABINET OR PLATFORM



The Stage 1 isolation should be positioned such that the IsoAcoustics logo is facing towards the front of the speaker or cabinet.

The Stage 1 isolators are rated for up to 200 lbs (90 kg) per set of 4.

The Stage 1 can be fastened to the underside of plywood to create isolation platform, or fastened directly to the bottom of the Guitar/Bass amps, cabinets, subwoofers or stage monitors.

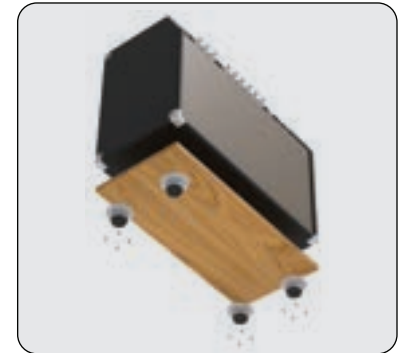
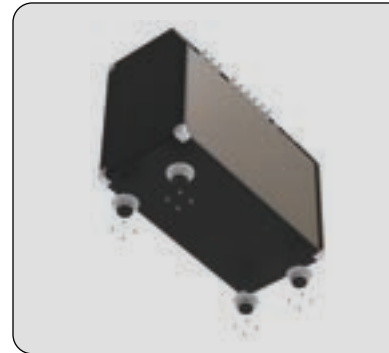
Package Contains

- 4 – IsoAcoustics Stage 1 isolators
- 16 – #10 x ¾" (19mm) wood screws

Tools required

- Drill
- 1/8" Drill bit
- Eye protection
- Philips screw driver
- Measuring tape
- Marker or pencil

Installation Guide



- 1) Carefully position the speaker or cabinet on its side or on its back. If installing on a platform, flip the platform upside down.
Note: The platform should be at least ¾" thick in order to use the supplied ¾" fasteners.
- 2) Determine where the Stage 1 isolators will be positioned on the base of the cabinet or platform. Ensure that the isolators are located on a level and flat section that allows the isolators to be flat against the base of the unit without any gaps. Sometimes existing feet can be removed and the Stage 1 can be installed in its location.
- 3) The Stage 1 isolators will be installed 1 at a time. Put the first isolator in position and rotate the Stage 1 isolator until the IsoAcoustics logo is facing towards the front of the speaker or platform.
- 4) Using a pencil or marker, mark the location for each of the 4 holes.
- 5) Drill a shallow pilot hole at each of the marked locations. The pilot hole should only be ½" deep. We recommend using painters tape to mark the depth of ½" on the drill bit. Drill until the tape reaches the base of the cabinet.
- 6) Install the Stage 1 isolator with the ¾" screws that are included using a Philips screw driver.
- 7) Repeat steps 3 to 6 for all of the Stage 1 isolators. Use measuring tape to ensure that each of the Stage 1 isolators are positioned equally.

