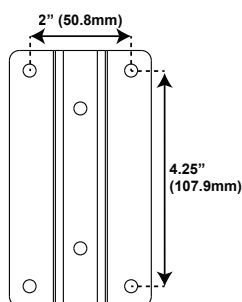


Safety Warnings

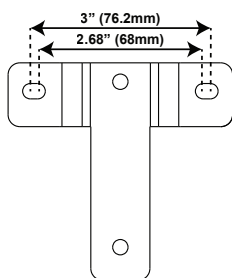
When using this product, basic safety precautions should always be followed to reduce the risk of injury, including the following:

- Read this installation guide very carefully and pay attention to the information contained within, before installing the V120 Adapters
- Installation should be carried out by trained installation personnel
- When mounting, observe and follow the local, national and international regulations and standards.

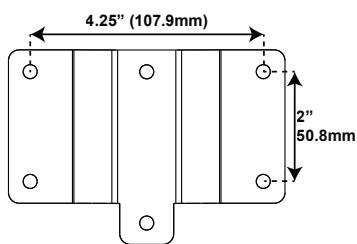
Models



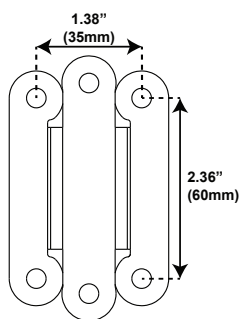
50x107 Adapter



T-Adapter



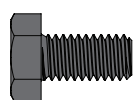
107x50 Adapter



35x60 Adapter

Hardware

Attach Adapter to Tilt Adjuster



M6 12mm



Lock Washer

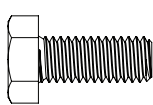


M6 Nut

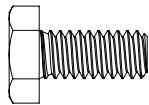
Attach Adapter to Studio Monitor



Lock Washer



M6



1/4"-20*



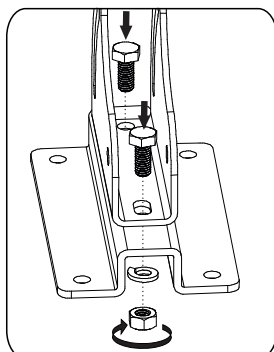
M6 Washer

*not included with 35x60 Adapter

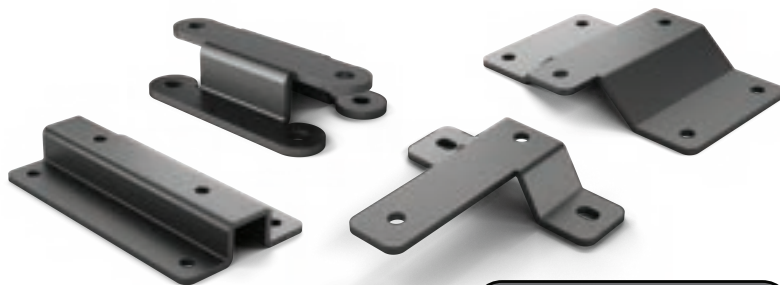
Instructions

1. Mount the adapter for your studio monitor to the Tilt Adjuster, using the following hardware included with the Adapter.

- Black M6 bolt (Qty 2)
- Lock washers (Qty 2)
- M6 Nut (Qty 2)



Adapters



Installation Guide

V120 Adapters mount common studio monitors to the V120 L-Bracket and C-Brackets.

Installation Video

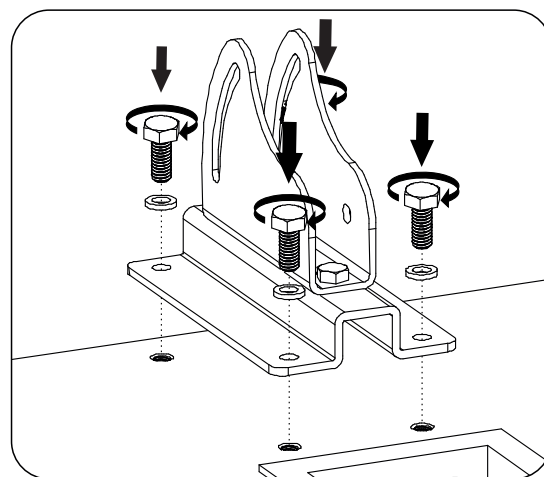


For video instructions on how to install the V120 adapters to the V120 Brackets, please use the QR code or shortened URL listed below:



<https://qrco.de/bdMZq1>

Instructions Cont.



2. Fasten the adapter to the threads on the back of the studio monitors using the silver bolts and lock washers included with the Adapter. Bolts might need to be purchased separately if a different size or length is required.
3. Follow the instructions included with the V120 mount and brackets to assemble the Brackets and mount them to the V120 mount.